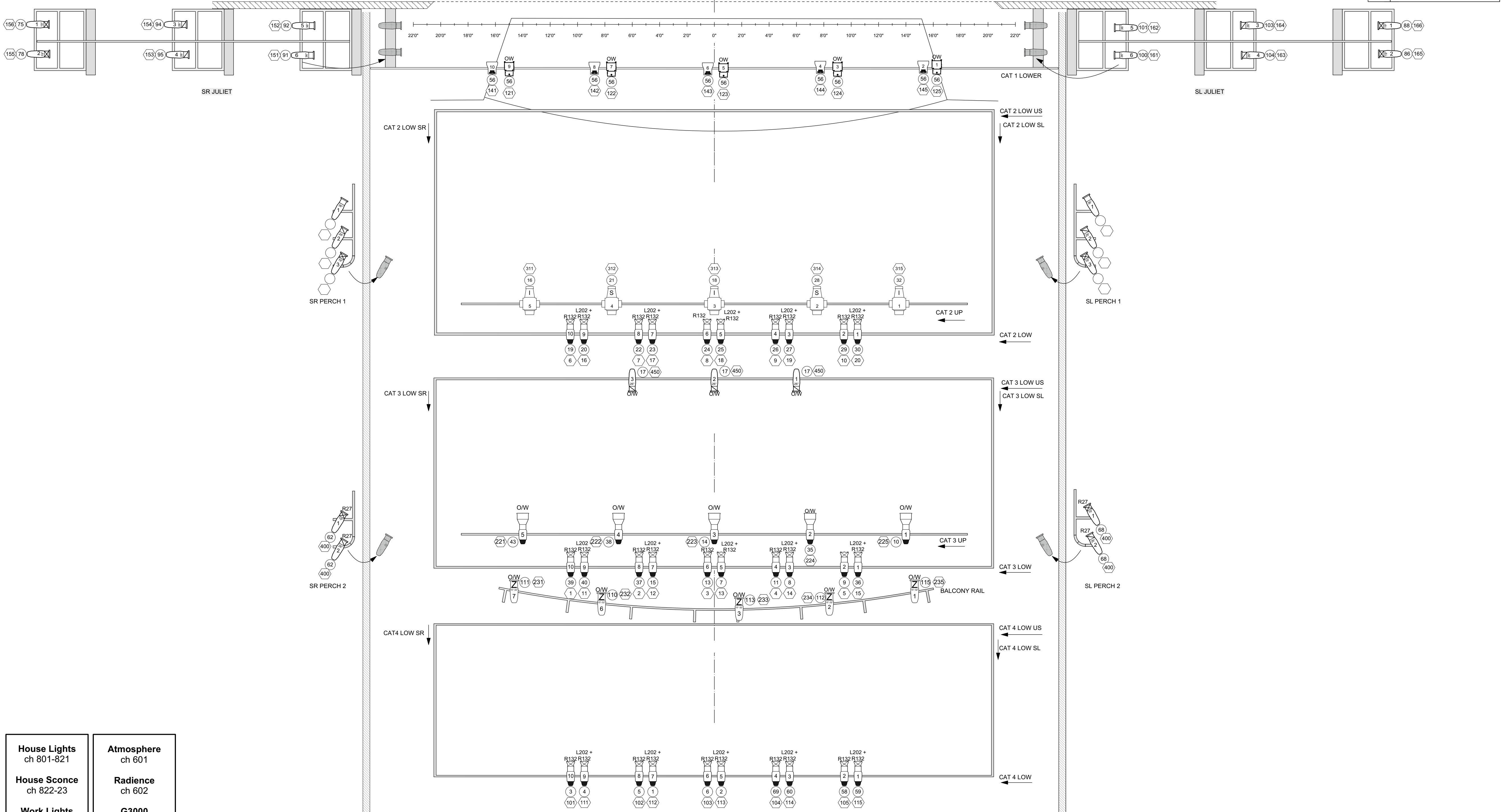


No.	Item
48	CYC
47	ELECTRIC 6
46	PVC PLASTIC
45	US BLACK OUT
44	BLACK SCRIM
43	LEGS 5
42	ELECTRIC 5
41	
40	
39	BORDER 5
38	
37	ELECTRIC 4
36	
35	
34	LEGS 4
33	BORDER 4
32	
31	SIDE FILLS
30	9X16 PROJECTION SCREEN
29	9X12 PROJECTION SCREEN
28	
27	ELECTRIC 3
26	
25	
24	
23	LEGS 3
22	BORDER 3 (BLK OUT)
21	
20	
19	
18	
17	ELECTRIC 2
16	
15	
14	
13	LEGS 2
12	BORDER 2
11	
10	SIDE FILLS
9	
8	
7	ELECTRIC 1
6	
5	PROJECTOR
4	LEGS 1
3	BORDER 1 (BLK OUT)
2	
1	HOUSE CURTAIN



House Lights ch 801-821	Atmosphere ch 601
House Sconce ch 822-23	Radiance ch 602
Work Lights ch 900	G3000 ch 603

KEY	
	S4 10' @ 750w 15 lbs
	S4 19' @ 750w 14 lbs
	S4 26' @ 750w 14 lbs
	S4 36' @ 750w 14 lbs
	SL 19' @ 575w 15 lbs
	SL 26' @ 575w 15 lbs
	SL 36' @ 575w 15 lbs
	S4 26' LUSTR 2 @ 130w 18.3 LBS
	S4 36' LUSTR 2 @ 130w 18.3 LBS
	SAWD PAR @ 155w 17 LBS
	D60 MR @ 161w 19.1 lbs
	COLOR SOURCE PAR MR @ 90w 8.3 lbs
	SL 15' @ 32' @ 575w 15 lbs
	SolaFrame Theatre @ 440w 111 lb
	VL 1000 SHUTTER @ 1kw 70.5 lbs
	VL 1000 IRIS @ 1kw 70.5 lbs
	8-way PS
	AURORA CYCLT @ 1kw
	IRIS 1 @ 1kw
	Beam Bender
	Christie D12HD-H
	DMX Node

TYPICAL SYMBOL	
	COLOR
	UNIT NO.
	DIMMER
	CHANNEL

THEATRE AT YORK		FAIRE / FECAN THEATRE	
HOUSE LIGHT PLOT			
DIRECTOR:			
LIGHTING BY:			
ELECTRICIAN:			
DATE:	SCALE:		
	1/4"=1'-0"		